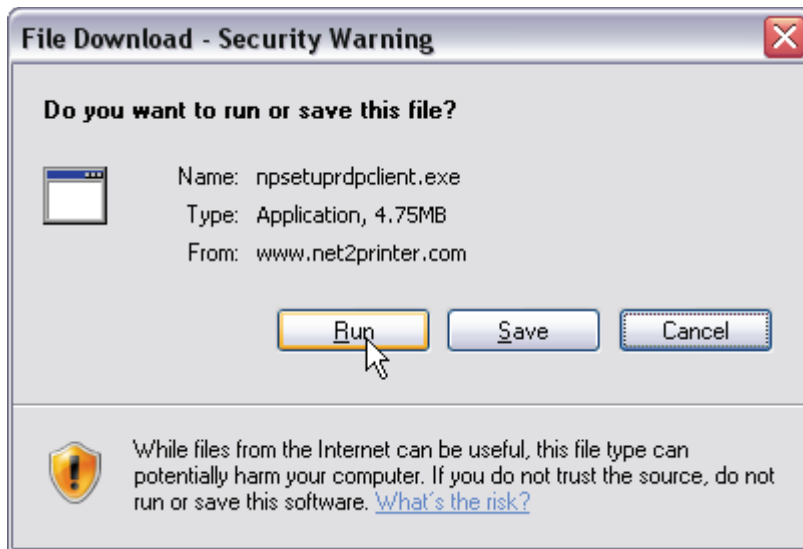


REMOTE CLIENT INSTALLATION

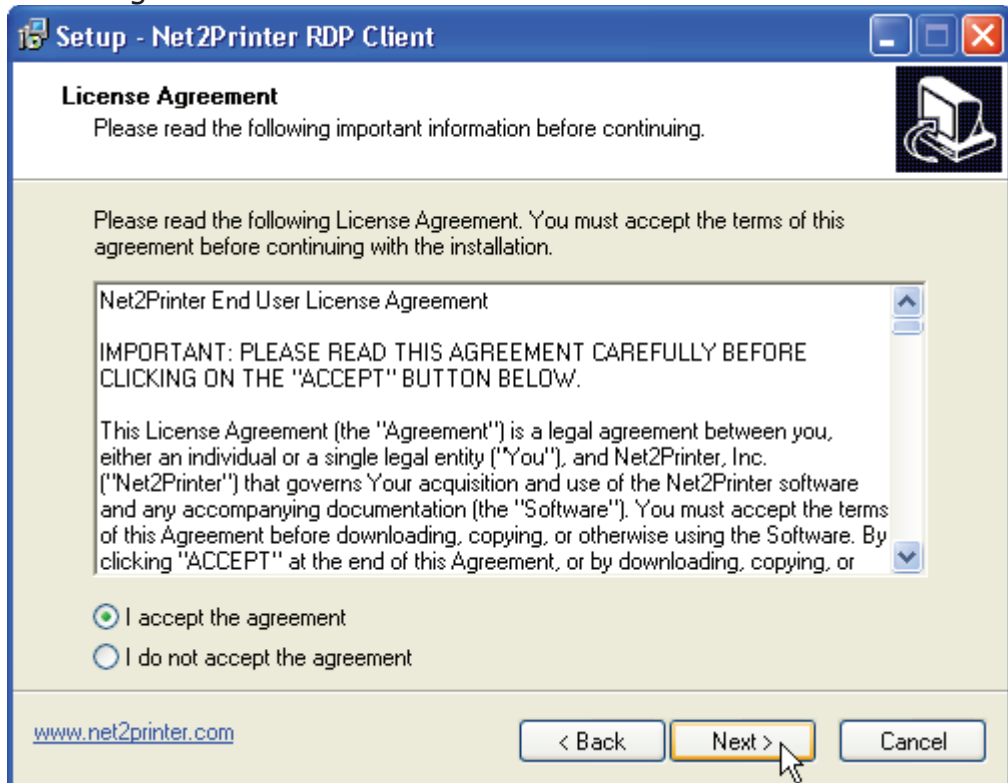
- a. Click on the link below or from your Internet browser paste the following URL in your browser:
<http://www.net2printer.com/downloads/rdp/npsetuprdpclient.exe>
- b. Select "Run" or "Open" from the dialog box and download software:



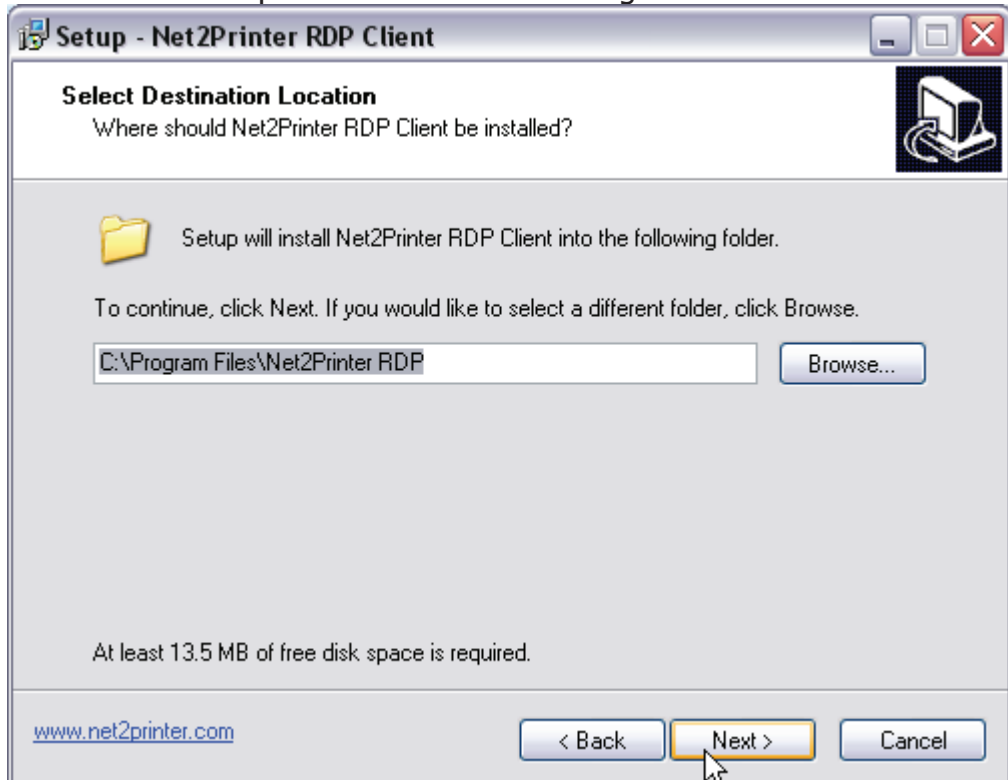
- c. Click *Next* to start the Net2Printer RDP Server installation:



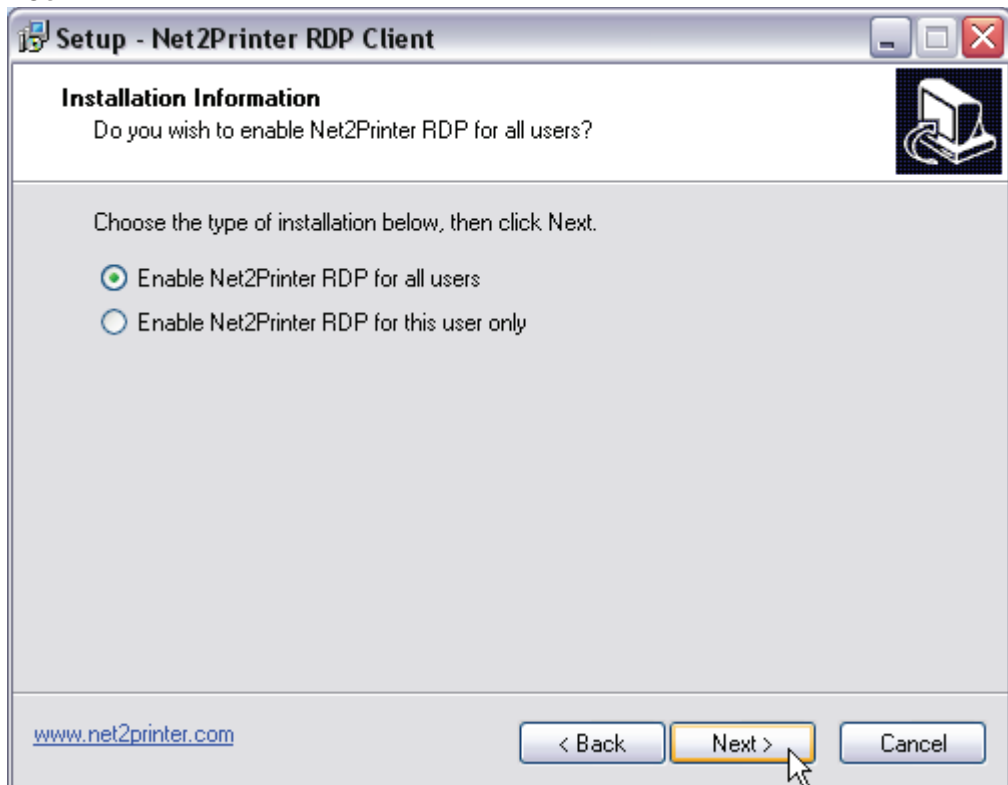
- d. Select "I accept the Agreement" to accept the Net2Printer RDP Client license agreement and continue the installation:



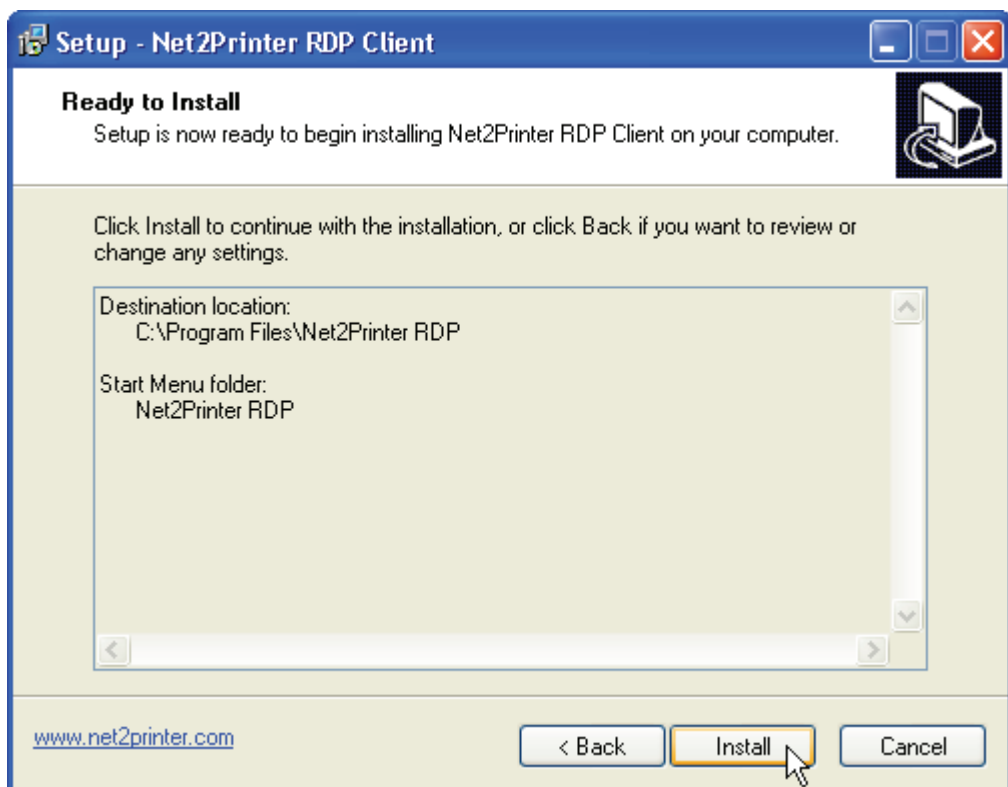
- e. Click *Next* to accept default location for Program folder:



- f. Choose whether you want to enable Net2Printer RDP for all users or not:



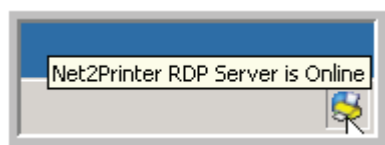
- g. Click *Install* to install application:



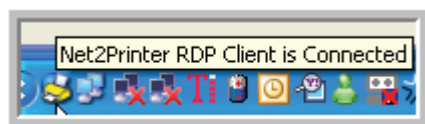
- h. Once the installation is complete, the following screen will be displayed. Click *Finish* to complete installation:



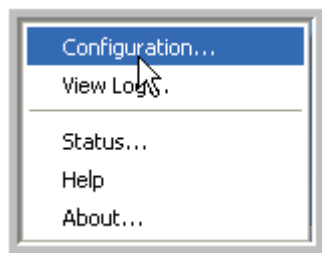
- i. When a client connects to a terminal server they should see the following icon in the session system tray:



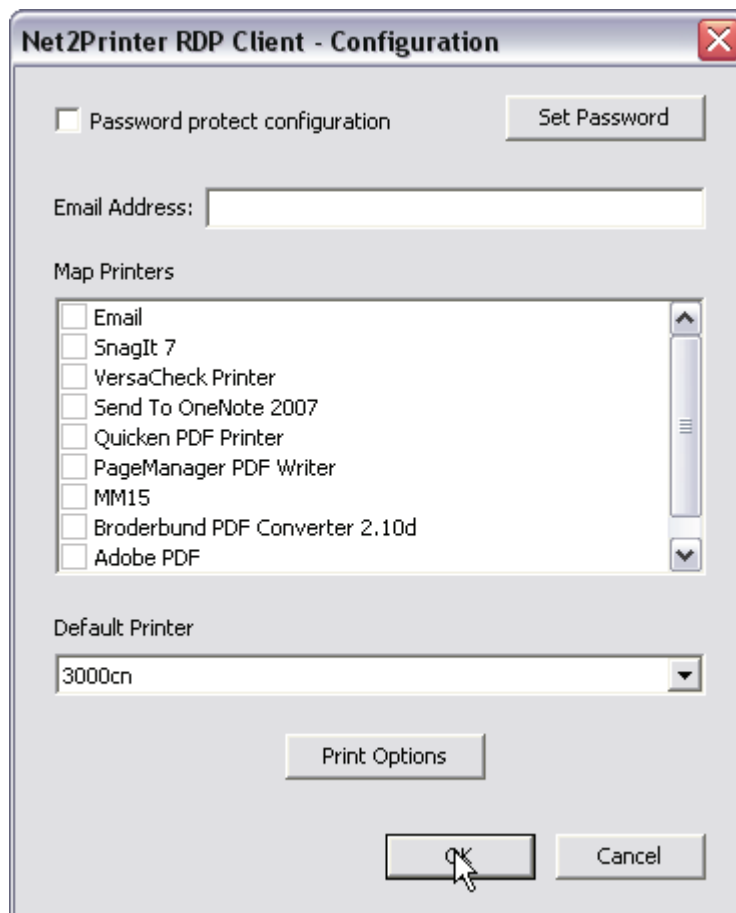
- j. And a similar icon in their local system tray:



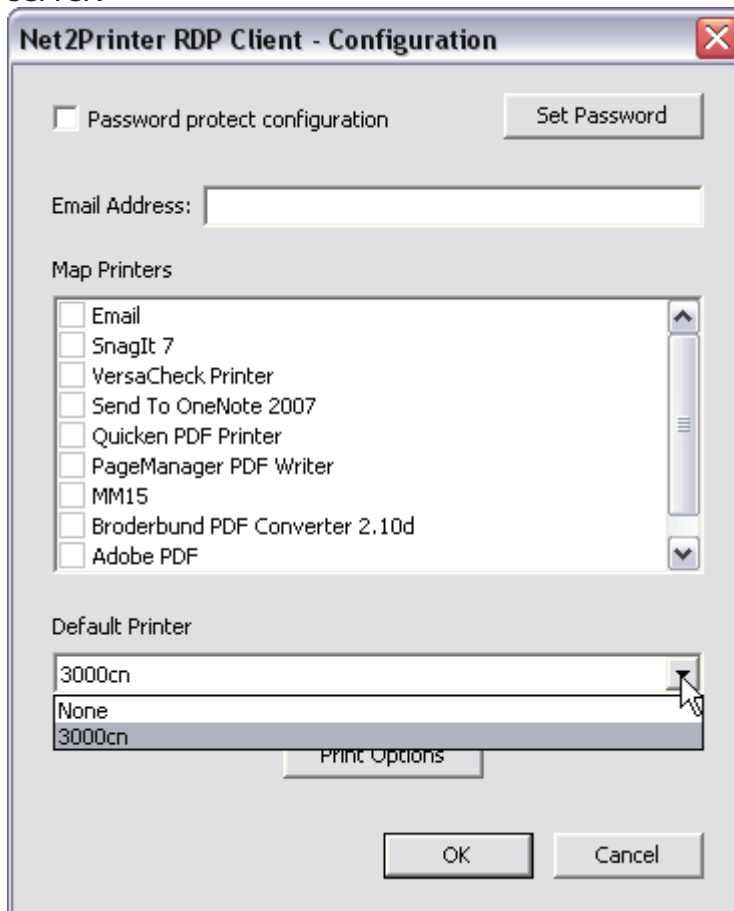
- k. Right clicking on the local system tray icon will display the following menu:



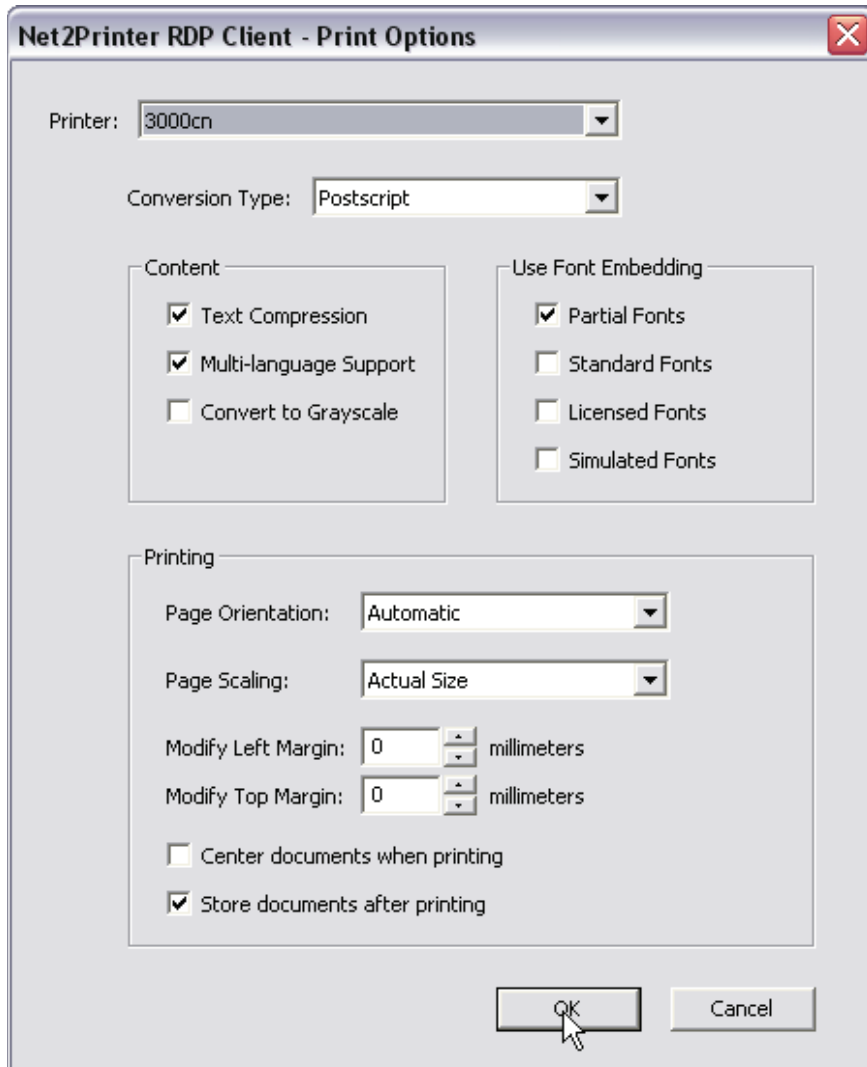
- l. Clicking *Configuration* will display the Configuration dialog. Checking a printer will map that printer on the server:



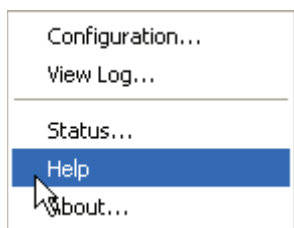
- m. The *Default Printer* dropdown will allow the user to choose which mapped printer is to be the default printer to be set on the terminal server:



- n. Clicking *Printer Options* will display the font and conversion settings for the currently selected printer:



For a more detailed explanation of the Printer Options, please refer the Net2Printer RDP Help documentation. You can access this documentation from the Net2Printer RDP Client system tray menu:



Or online at: <http://www.net2printer.com/onlinehelp/rdp/index.htm>